



Information on Accreditation of Overseas Programmes

The Institution of Environmental Sciences (IES), through its education committee, the Committee of Heads of Environmental Sciences (CHES), offers professional accreditation to CHES members for Masters, Honours and Foundation Programmes. The scheme also covers HE provision within FE institutions.

Only CHES members may apply for accreditation. Undergraduate Programmes should fall within the remit of the [Benchmark Statement](#) for Earth Sciences, Environmental Sciences and Environmental Studies, and Masters Programmes should clearly align with this benchmark.

Application and re-accreditation process

As the first port of call, a non-UK university should contact info@the-ies.org to signal their intent to apply for accreditation. They will then be appointed a mentor to help guide them through the process. You will need to have joined as a CHES Member by this stage.

Your accreditation application needs to include:

- ✓ Completed application form
- ✓ ES3 Benchmark Statement mapping table
- ✓ Relevant current Programme Specification (or equivalent)

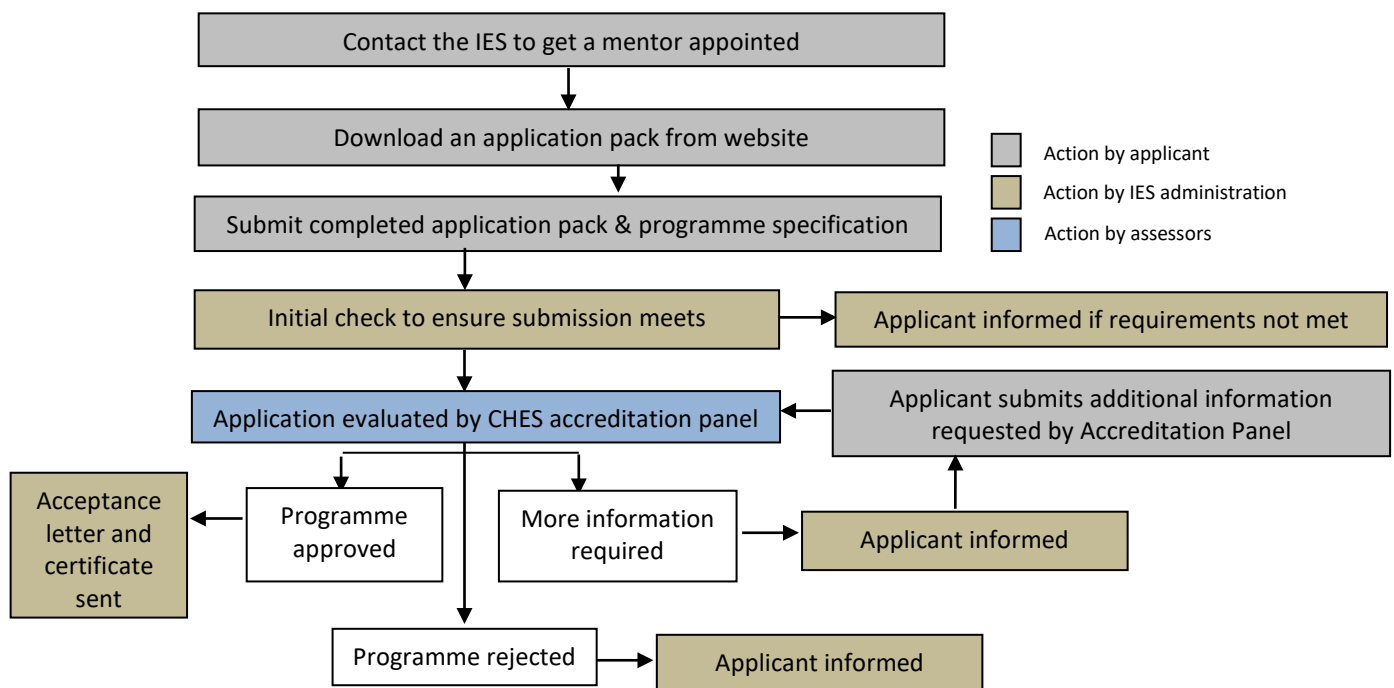
No additional documentation is required; any other materials submitted will not be considered.

A separate application form is required for each individual programme. **Information in the application form must not duplicate the Programme Specification (or similar);** ‘cut-and-paste’ from programme specifications must be avoided.

Our scheme avoids duplication of national quality management and enhancement processes and standards (i.e. Benchmark Statements). The application form consists of two sections: Section A *The Programme*; and Section B *Environmental Professional Practice*. A strict word limit of 1,500 words for each section applies.

An application that does not meet the requirements specified above will be returned without a full evaluation. For example, application forms that duplicate the programme specification or submissions exceeding the word limit.

Applications are reviewed by an Accreditation Panel of the IES and CHES Executives which meets four times a year.





ES3 Benchmark Statement

Programmes aligned with CHES' accreditation scheme should reflect the standards detailed by the [QAA Earth Sciences, Environmental Sciences and Environmental Studies \(ES3\) Benchmark Statement](#). The application process includes completing a mapping table to demonstrate clearly where the ES3 Benchmark learning outcomes are included throughout the delivery of the programme. If the programme does not meet one of the learning outcomes, a contextual narrative can be included within the application.

Cost

The initial cost of accrediting a single Programme is £650, with a charge of £250 for each additional programme. In cases where referral and a visit are necessary, there may be additional charges. After approval for accreditation, there will be a recurring Accredited Membership fee of £500 per annum to cover CHES membership and the administration costs for the production and supply of graduate certificates. This is a flat fee regardless of how many programmes you have accredited. Only members of CHES may apply for or hold accreditation: accreditation will be withdrawn if CHES membership is allowed to lapse.

Every five years, or sooner if there are significant changes, the course will need to be reaccredited. This is to ensure the programme still meets the requirements necessary for accreditation. Reaccreditation is charged at £250 per course.

Programmes with additional year variants

There is strong evidence that sandwich placements and general work experience enhance employability. Therefore, departments are encouraged to accredit additional year derivatives, along with their parent programmes, by providing respective course specifications. Accreditation of these variants is free of charge, with the accreditation fee covering all approved derivatives of the course.

This applies to all Year in Industry, Professional Placement, Year Abroad and Foundation Year courses. Integrated masters, joint honours, and pathways resulting in different degree titles must be accredited separately.

After Accreditation

After approval, accreditation will normally last for five years. Post-accreditation, any significant programme changes need to be reported to CHES in a timely manner. Changes which require reaccreditation include, but are not limited to:

- the removal/reduction of field or laboratory work;
- changes to course content which exceed 25%;
- the reduction of science content to less than 50% of the syllabus;
- changes to assessment in core modules;
- changes that affect the mapping of the programme against the ES3 Subject Benchmark Statement; or
- any other changes that would trigger an institutional review of the programme

The impacts of the changes will then be considered by the Accreditation Panel in relation to the requirements of accreditation and a decision made regarding continuation of the accreditation for the remainder of the five-year period. If a resubmission is required and the programme accepted for accreditation, the accreditation will last for five years after approval of the resubmission.

Every five years, or sooner if there are significant changes, the course will need to be reaccredited. This is to ensure the programme still meets the requirements necessary for accreditation. Reaccreditation is charged at £200 per course.

Further information

Any further clarification required may be obtained from info@the-ies.org or ++44 (0)20 3862 7484.